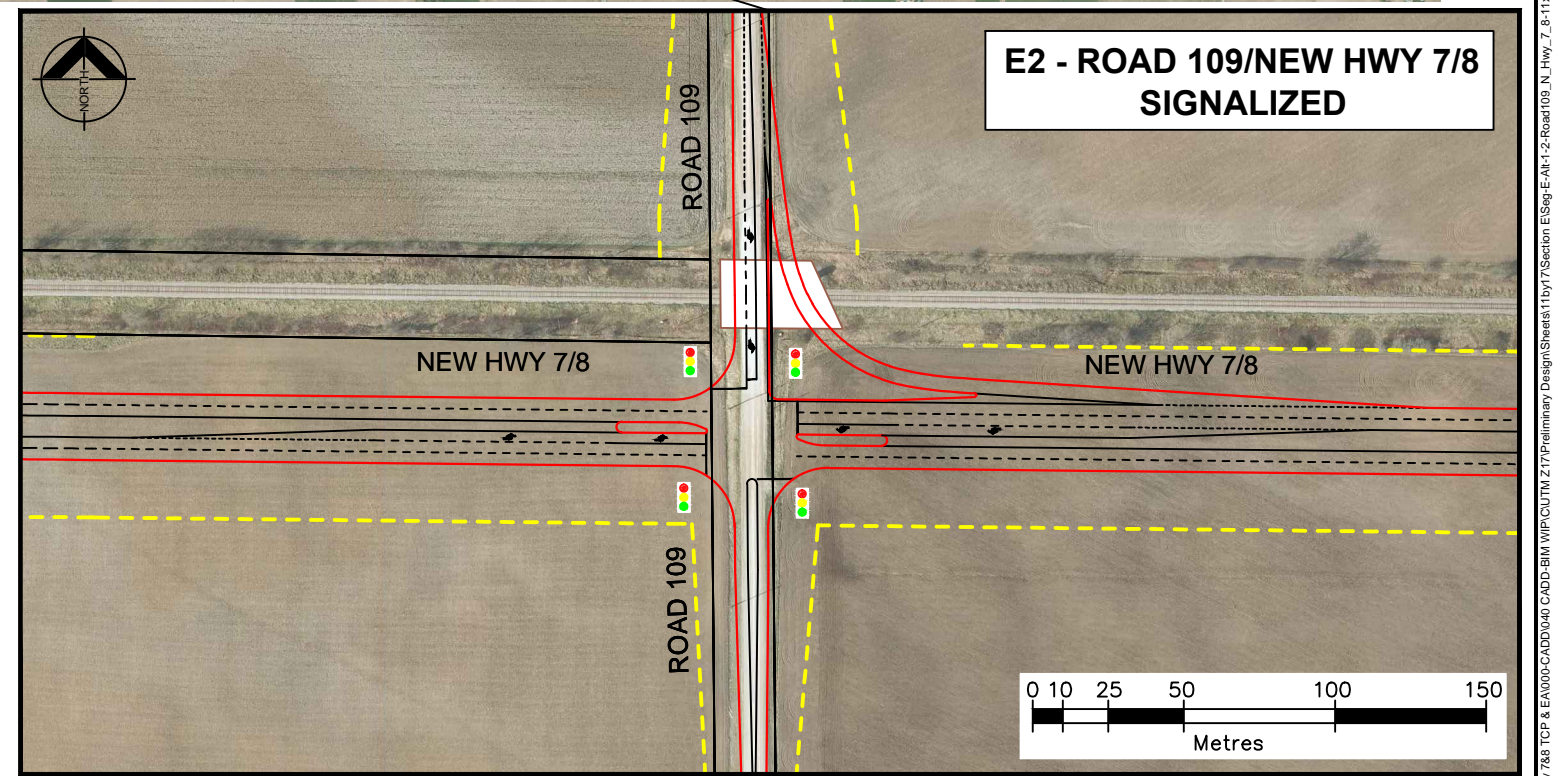
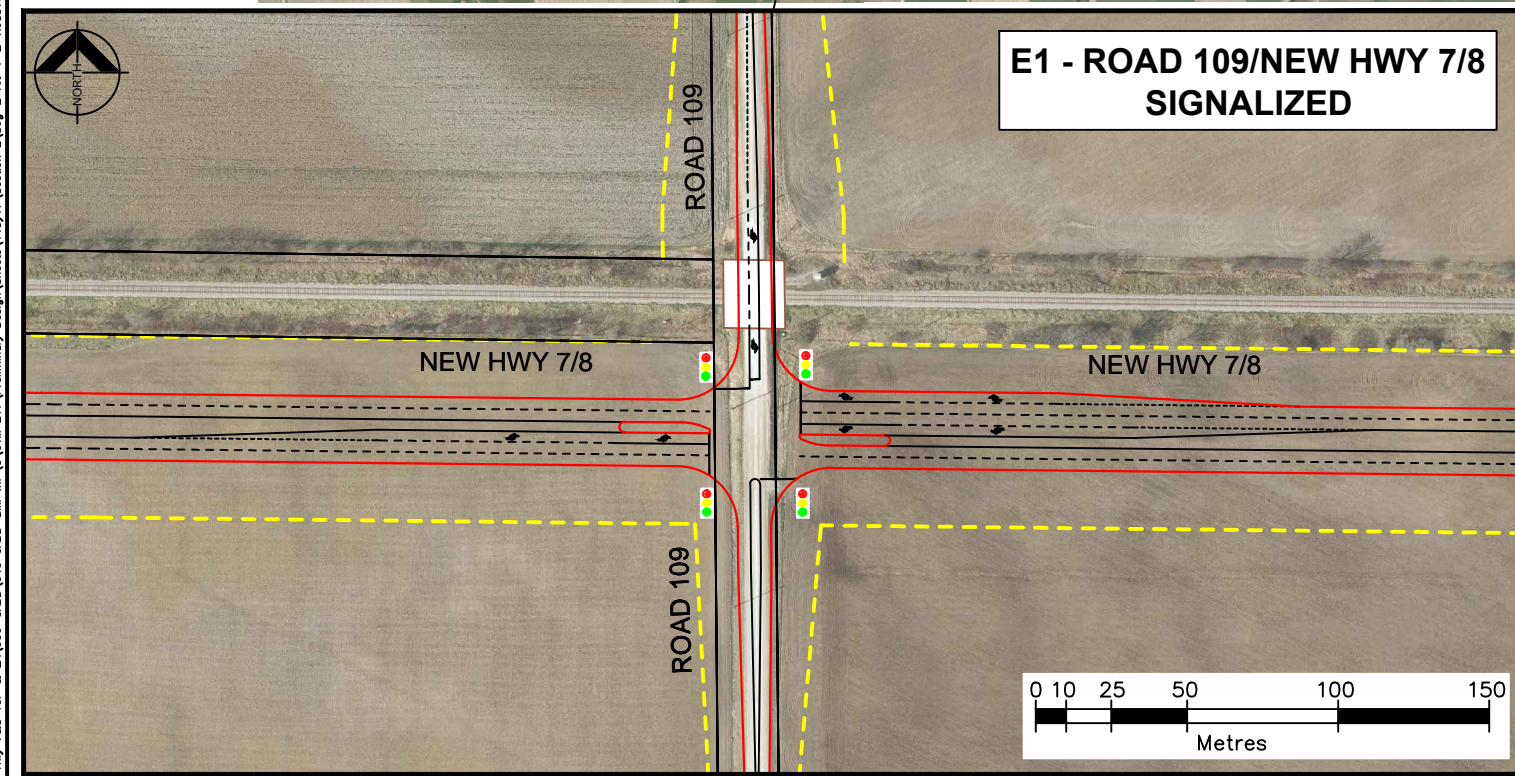
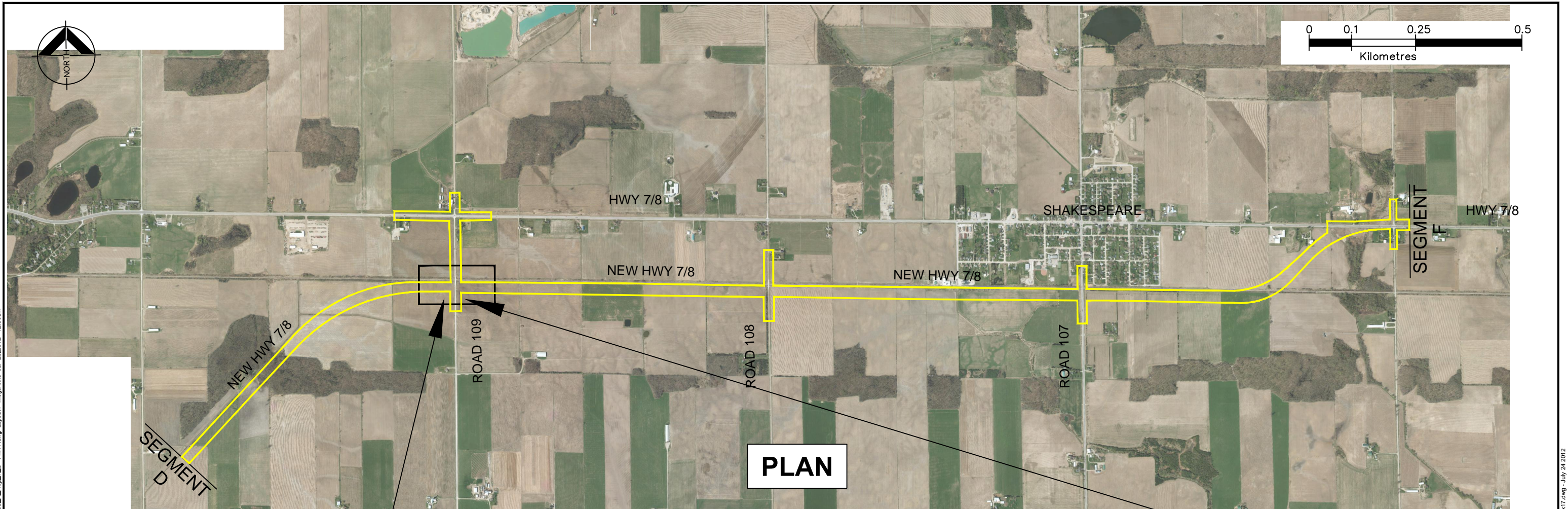


APPENDIX E

Segment E Cross Section and Intersection Treatment Alternatives

G:\PROJECTS\242-60-42-80503 Hwy 7&8 TCP & EA\000-CADD\040 CADD-BM WIP\CUTM 217\Preliminary Design\Sheets\11by17\Section E\Seg-E-Alt-1-2-Road109_N_Hwy_7_B-11x17.dwg Layout1 mdeljnlke Jul 25,2012-12:06pm



This drawing has been prepared for the use of AECOM's client and may not be used, reproduced or relied upon by third parties, except as agreed by AECOM and its client, as required by law or for use by governmental reviewing agencies. AECOM accepts no responsibility and disclaims any liability whatsoever, to any party that modifies this drawing without AECOM's express written consent.
Do not scale this document. All measurements must be obtained from stated dimensions.



No.	DATE	BY	ISSUES / REVISIONS



CLIENT:

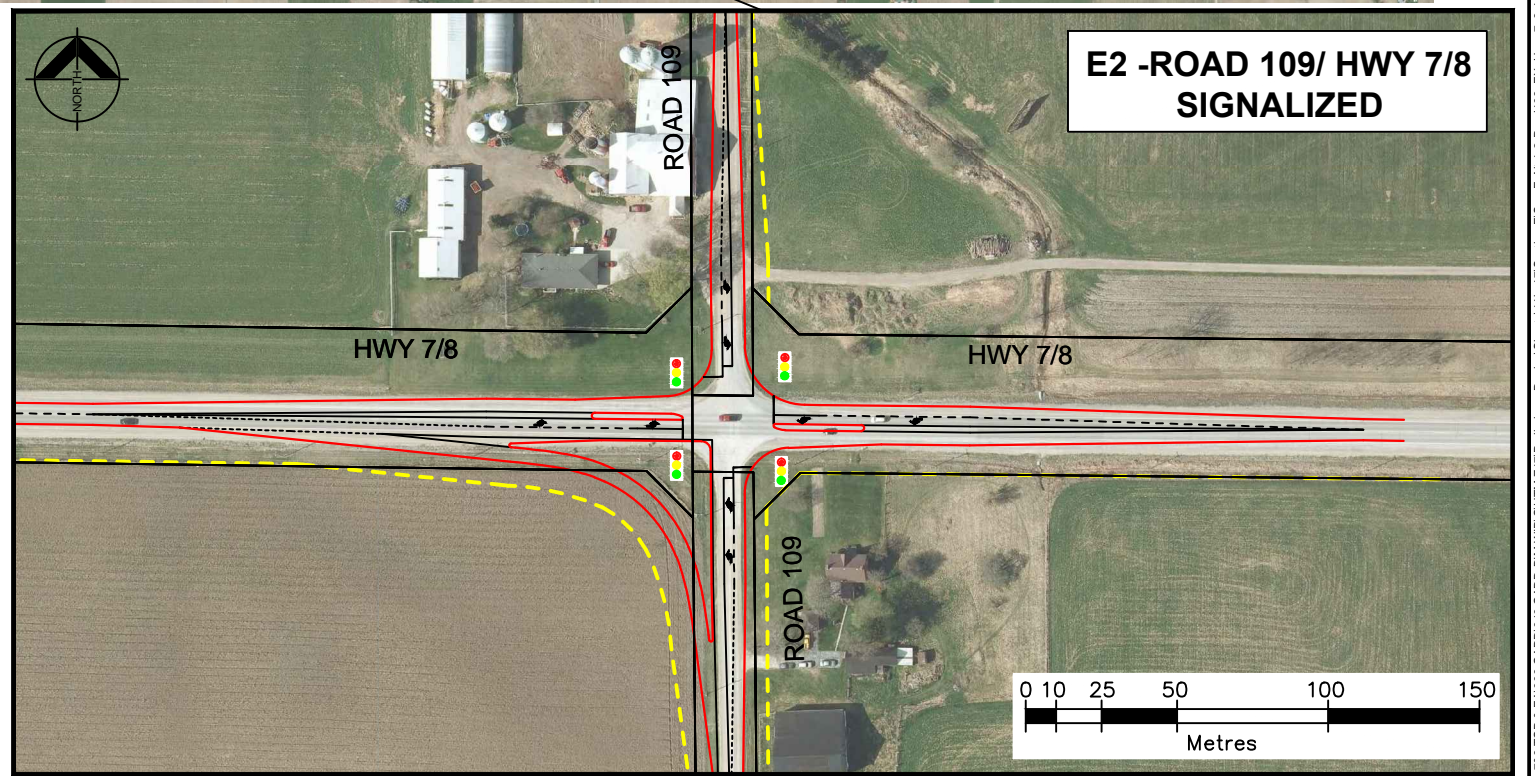
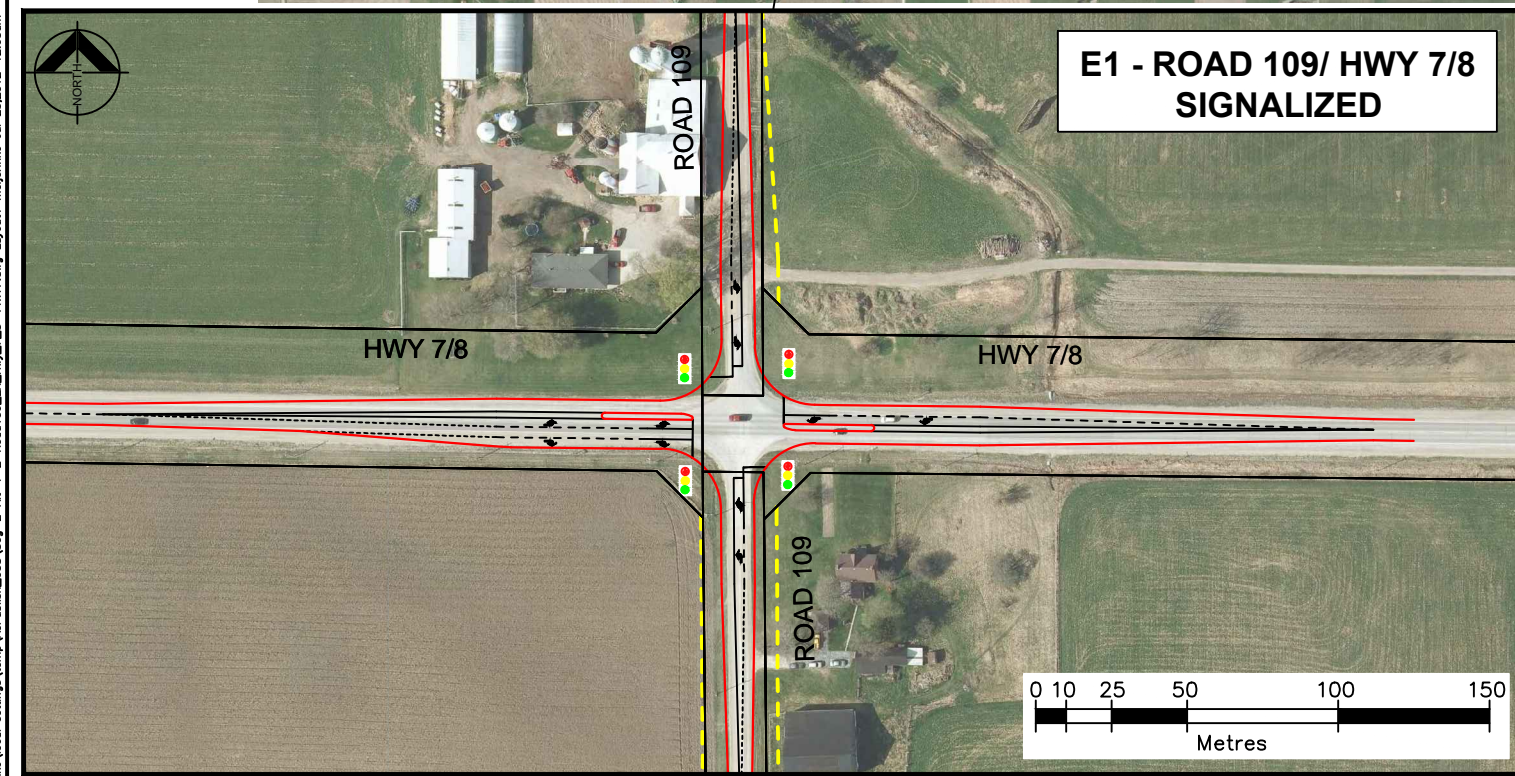
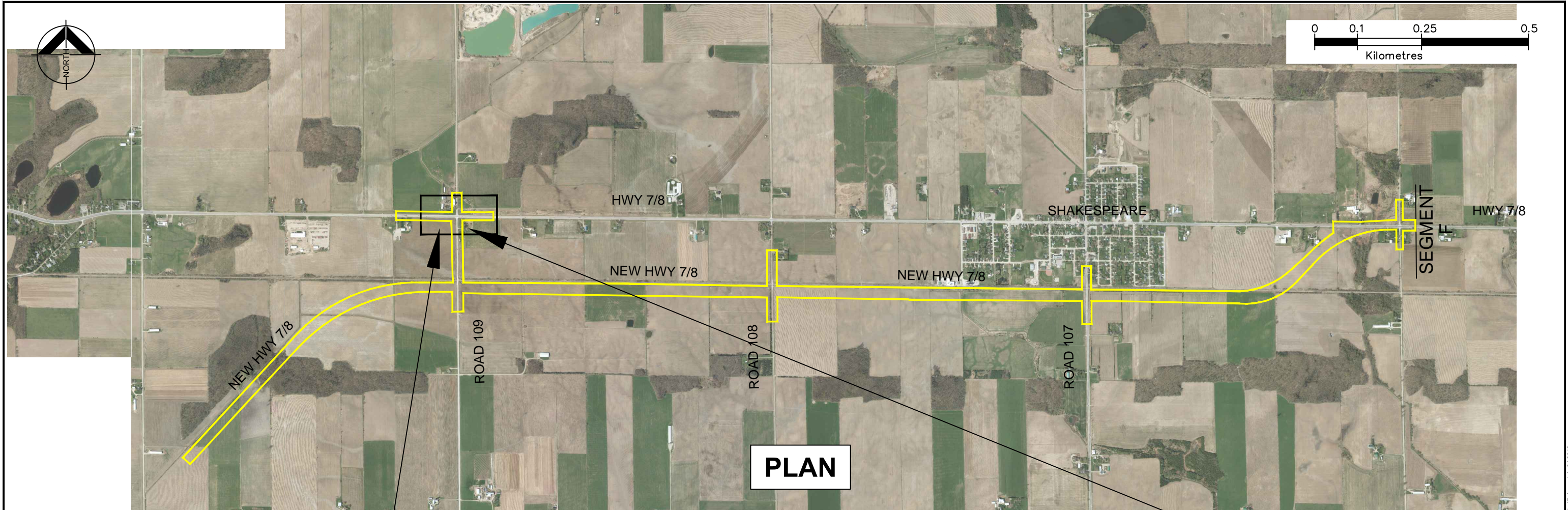
DRAWN BY: B HOODSON
DESIGNED BY:
SCALE:
CHECKED BY:
APPROVED BY:
DATE: JULY 2012

PROJECT: HIGHWAY 7/8 TRANSPORTATION CORRIDOR & CLASS EA STUDY
PRELIMINARY DESIGN ALTERNATIVES

DRAWING: SEGMENT E
ROAD 109/NEW HWY 7/8
ALTERNATIVE E1, E2

PROJECT No.: 60117929
DRAWING No.: SE-1

G:\PROJECTS\242-60-42-80503 Hwy 7&8 TCP & EA\000-CADD\040 CADD-BM WIP\CUTM 217\Preliminary Design\Sheets\11by17\Section E\Seg-E-Alt-1-2-Road109_N_Hwy_7_B-11x17.dwg - July 24, 2012



C:\Documents and Settings\meijerike\local settings\temp\ac\publin\890_Seg-E-Alt-1-2-Road109_EX_Hwy_7_8-1x17.dwg_Layout1_meljanke Jul 25, 2012 - 12:03pm

This drawing has been prepared for the use of AECOM's client and may not be used, reproduced or relied upon by third parties, except as agreed by AECOM and its client, as required by law or for use by governmental reviewing agencies. AECOM accepts no responsibility, and denies any liability whatsoever, to any party that modifies this drawing without AECOM's express written consent.
Do not scale this document. All measurements must be obtained from stated dimensions.

AECOM
AECOM Canada Ltd.
300 Water Street, Whitby, Ontario, Canada L1N 9J2
T905.668.9363 F905.668.0221

No.	DATE	BY	ISSUES / REVISIONS

CLIENT:

DRAWN BY: B HOODSON	CHECKED BY:
DESIGNED BY:	APPROVED BY:
SCALE:	DATE: JULY 2012

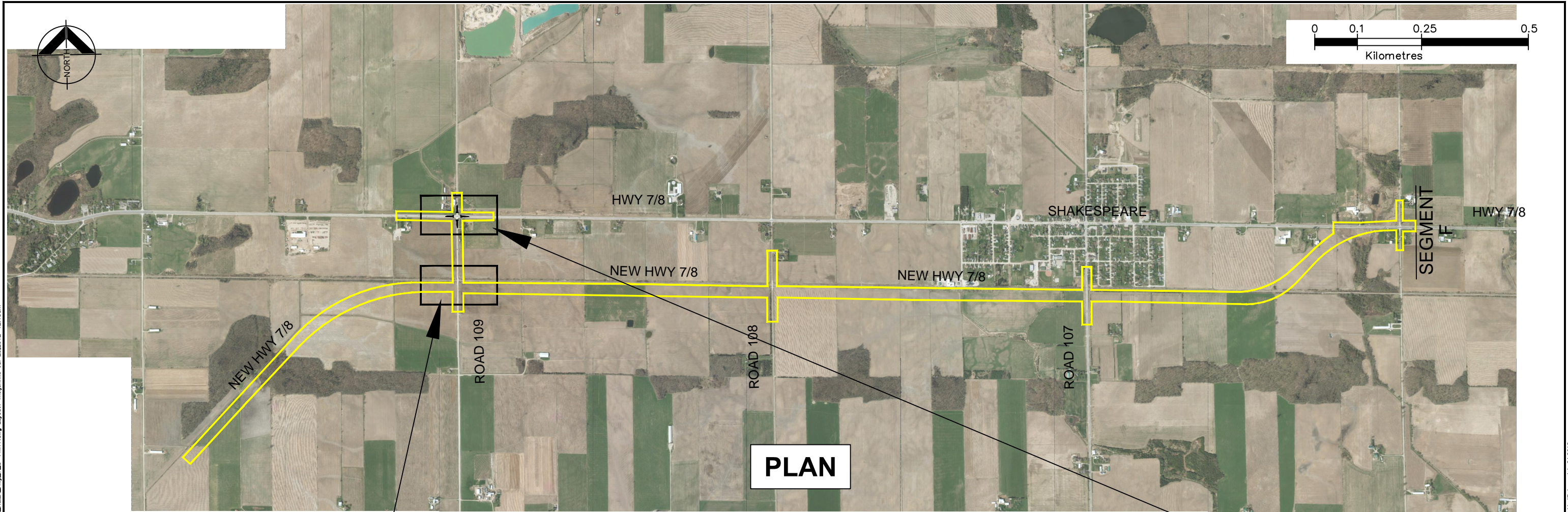
PROJECT: **HIGHWAY 7/8 TRANSPORTATION CORRIDOR & CLASS EA STUDY**
PRELIMINARY DESIGN ALTERNATIVES

DRAWING: **SEGMENT E**
ROAD 109/EXIST HWY 7/8
ALTERNATIVE E1, E2

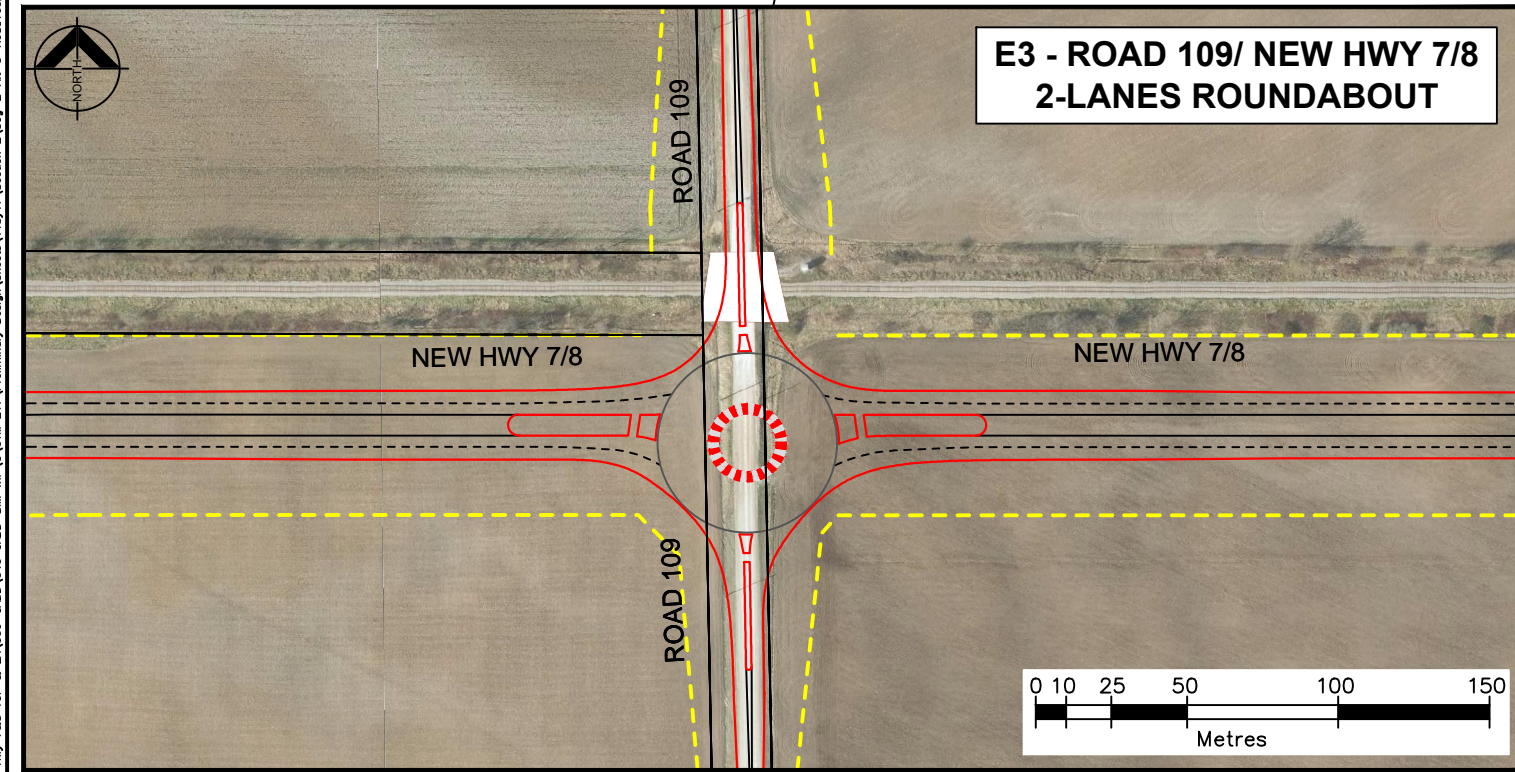
PROJECT No.: 60117929
DRAWING No.: **SE-2**

C:\PROJECTS\242-2012-20503 Hwy 7&8 TCP & EA\000-CADD\040 CADD-BIM WIP\CUTM 217P\Primary Design\Sheets\11by7\Section E\Seg-E-Alt-1-2-Road109_EX_Hwy_7_8-1x17.dwg - July 24 2012

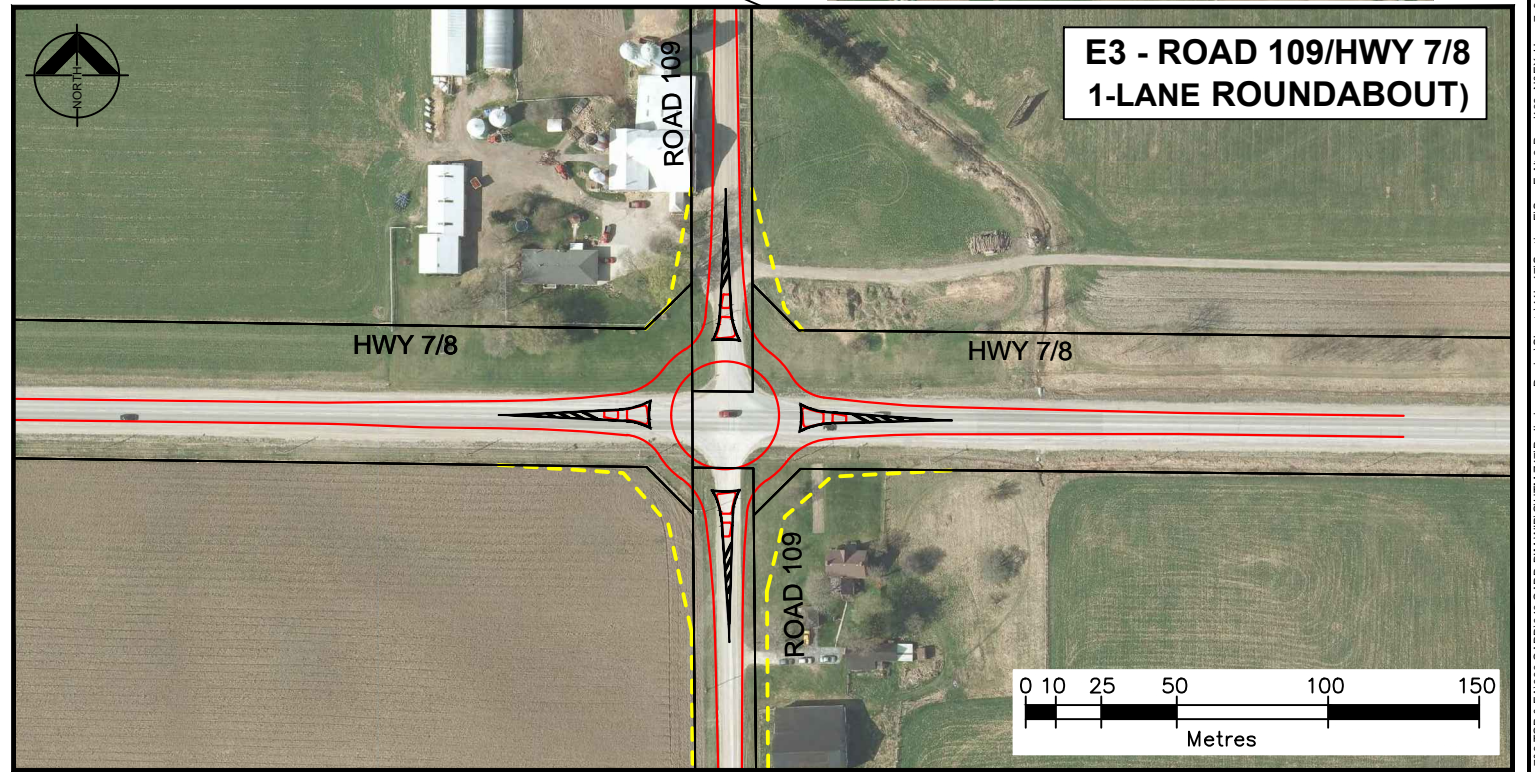
G:\PROJECTS\242-60-42-80503 Hwy 7&8 TCP & EA\000-CADD\040 CADD-BIM WIP\CUTM 217\Preliminary Design\Sheets\11by7\Section E\Seg-E-AI-3-Road109_Layout1.mxd Jul 25, 2012 - 12:15pm



PLAN



**E3 - ROAD 109/ NEW HWY 7/8
2-LANES ROUNDABOUT**



**E3 - ROAD 109/HWY 7/8
1-LANE ROUNDABOUT)**

This drawing has been prepared for the use of AECOM's client and may not be used, reproduced or relied upon by third parties, except as agreed by AECOM and its client, as required by law or for use by governmental reviewing agencies. AECOM accepts no responsibility, and denies any liability whatsoever, to any party that modifies this drawing without AECOM's express written consent.
Do not scale this document. All measurements must be obtained from stated dimensions.



AECOM Canada Ltd.
300 Water Street, Whitby, Ontario, Canada L1N 9J2
T905.668.9363 F905.668.0221

No.	DATE	BY	ISSUES / REVISIONS

CLIENT:



DRAWN BY: B HODSON	CHECKED BY:
DESIGNED BY:	APPROVED BY:
SCALE:	DATE: JULY 2012

**PROJECT: HIGHWAY 7/8 TRANSPORTATION CORRIDOR
& CLASS EA STUDY
PRELIMINARY DESIGN ALTERNATIVES**

DRAWING:
**SEGMENT E
ROAD 109/NEW HWY 7/8 & ROAD 109/ HWY 7/8
ALTERNATIVE E3**

PROJECT No.:
60117929

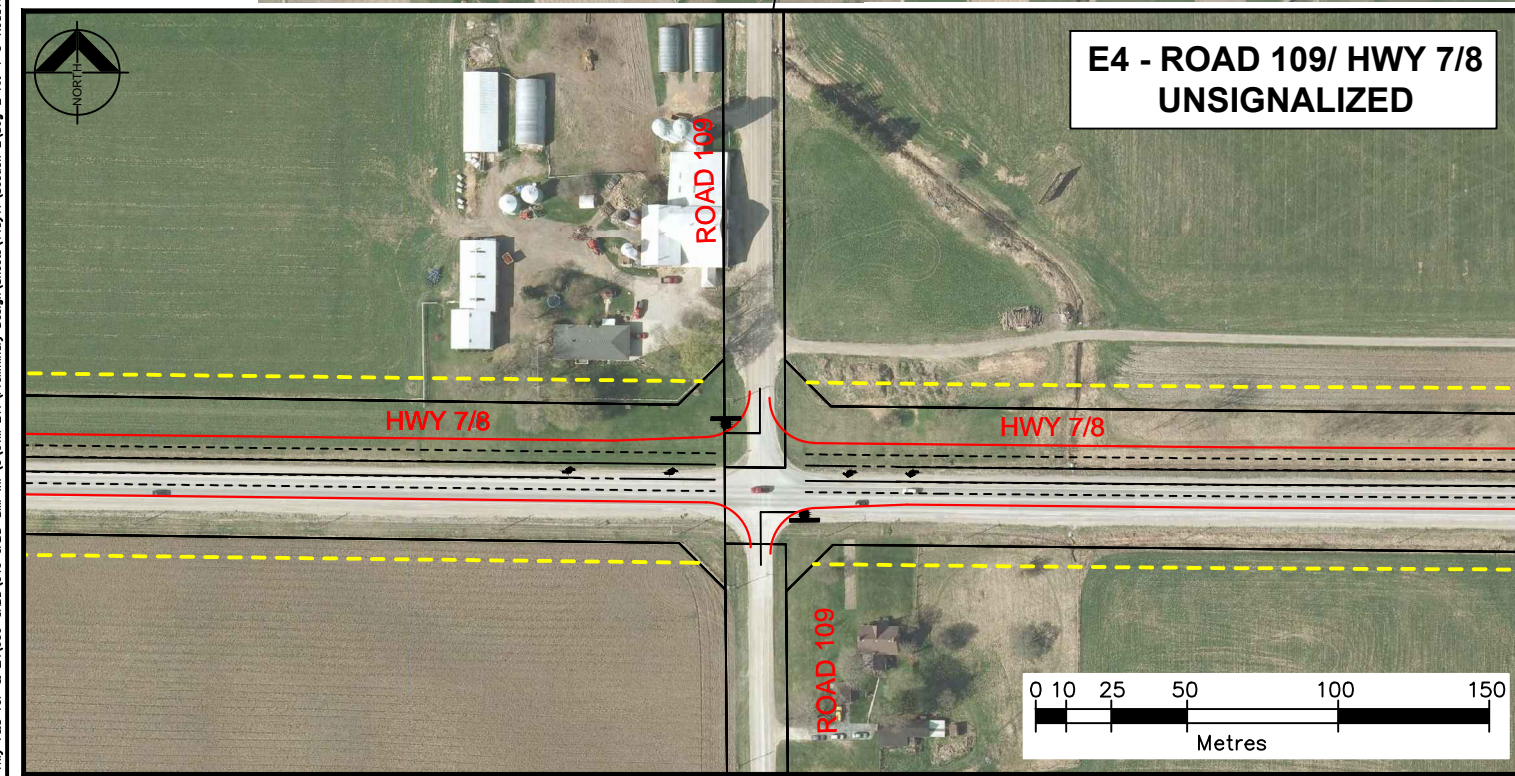
DRAWING No.:
SE-3

G:\PROJECTS\242-60-42-80503 Hwy 7&8 TCP & EA\000-CADD\040 CADD-BIM WIP\CUTM 217\Preliminary Design\Sheets\11by7\Section E\Seg-E-AI-3-Road109_Layout1.mxd Jul 25, 2012 - 12:15pm

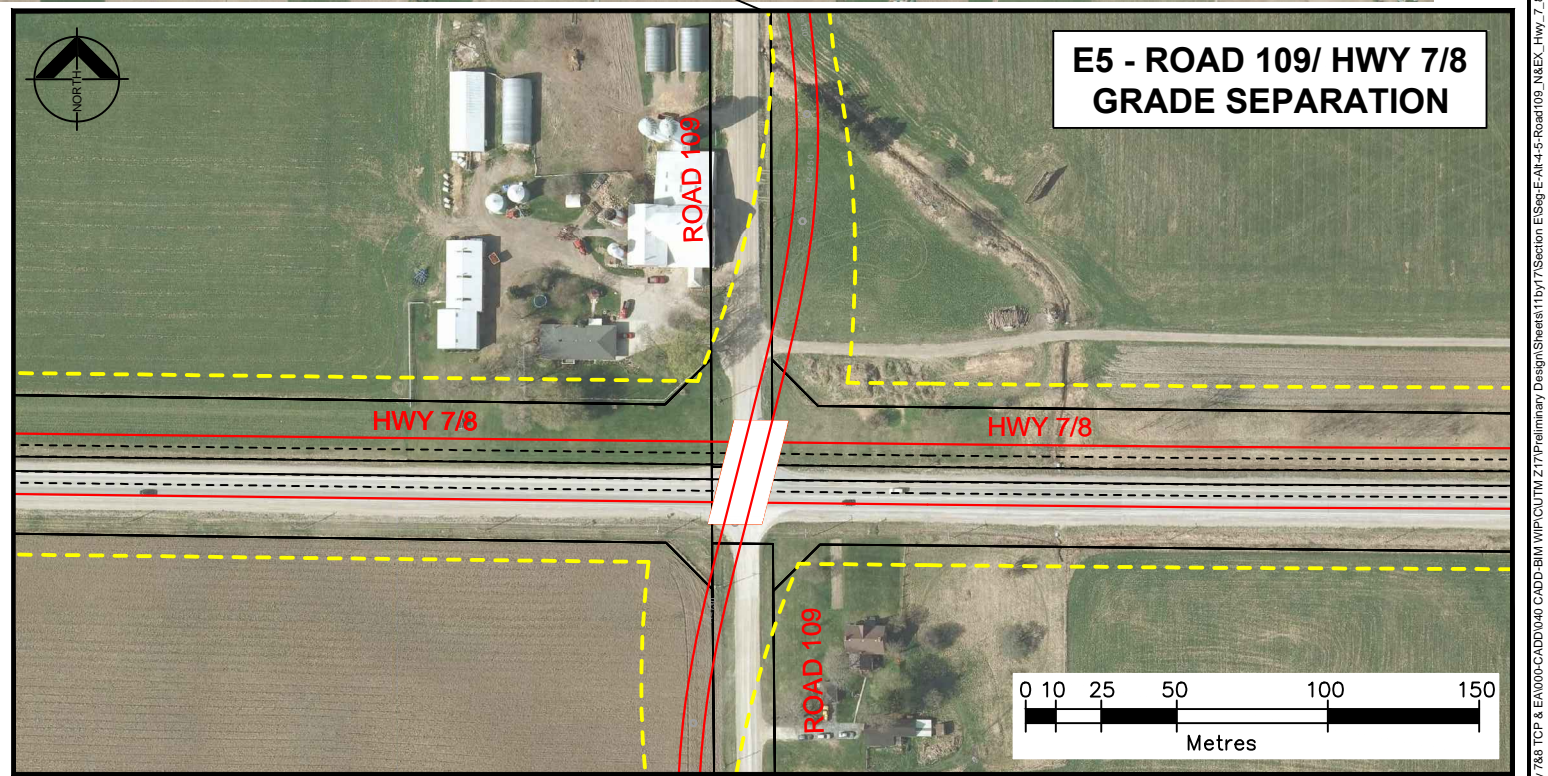
G:\PROJECTS\42-60-42-60-42-80503 Hwy 7&8 TCP & EA\000-CADD\040 CADD-BM WIP\CUTM 217\Preliminary Design\Sheets\11by17\Section E\Seg-E-Alt-4-5-Road109_N&E_Hwy_7_8-11x17.dwg Layout1 mcejrinke Jul 25 2012 - 12:25pm



PLAN



**E4 - ROAD 109/ HWY 7/8
UNSIGNALIZED**



**E5 - ROAD 109/ HWY 7/8
GRADE SEPARATION**

This drawing has been prepared for the use of AECOM's client and may not be used, reproduced or relied upon by third parties, except as agreed by AECOM and its client, as required by law or for use by governmental reviewing agencies. AECOM accepts no responsibility, and denies any liability whatsoever, to any party that modifies this drawing without AECOM's express written consent.

Do not scale this document. All measurements must be obtained from stated dimensions.



AECOM Canada Ltd.
300 Water Street, Whitby, Ontario, Canada L1N 9J2
T905.668.9363 F905.668.0221

No.	DATE	BY	ISSUES / REVISIONS

CLIENT:



DRAWN BY: B HOODSON	CHECKED BY:
DESIGNED BY:	APPROVED BY:
SCALE:	DATE: JULY 2012

**PROJECT: HIGHWAY 7/8 TRANSPORTATION CORRIDOR
& CLASS EA STUDY
PRELIMINARY DESIGN ALTERNATIVES**

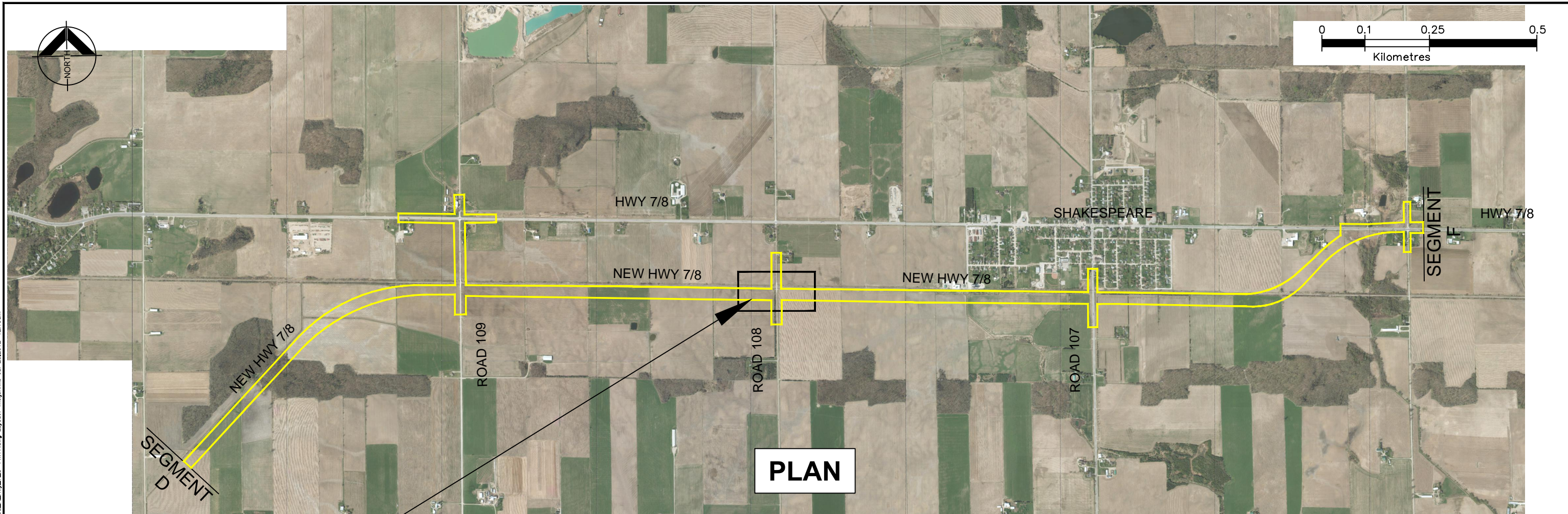
DRAWING:
**SEGMENT E
ROAD 109/ HWY 7/8
ALTERNATIVES E4, E5**

PROJECT No.:
60117929

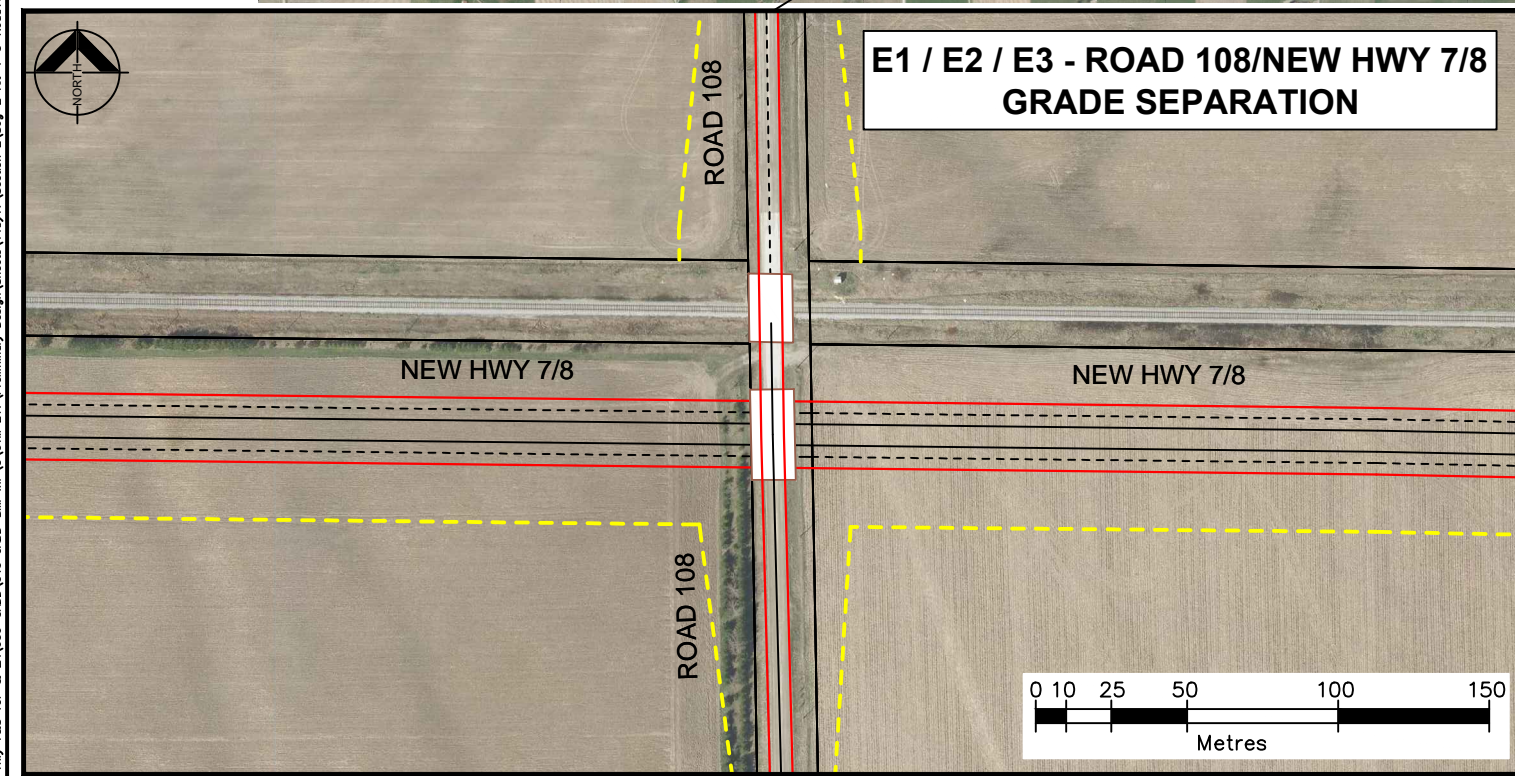
DRAWING No.:
SE-4

G:\PROJECTS\42-60-42-80503 Hwy 7&8 TCP & EA\000-CADD\040 CADD-BM WIP\CUTM 217\Preliminary Design\Sheets\11by17\Section E\Seg-E-Alt-4-5-Road109_N&E_Hwy_7_8-11x17.dwg - July 24 2012

G:\PROJECTS\242-60-42-80503 Hwy 7&8 TCP & EA\000-CADD\040 CADD-BM WIP\C\UTM 217\Preliminary Design\Sheets\11by17\Section E\Seg-E-Al-1-3-Road 108_N_Hwy_7_B-11x17.dwg Layout1 mdrjrnk Jul 25,2012-12:13pm



PLAN



This drawing has been prepared for the use of AECOM's client and may not be used, reproduced or relied upon by third parties, except as agreed by AECOM and its client, as required by law or for use by governmental reviewing agencies. AECOM accepts no responsibility and denies any liability whatsoever, to any party that modifies this drawing without AECOM's express written consent.

Do not scale this document. All measurements must be obtained from stated dimensions.



No.	DATE	BY	ISSUES / REVISIONS



DRAWN BY: B HOODSON	CHECKED BY:
DESIGNED BY:	APPROVED BY:
SCALE:	DATE: JULY 2012

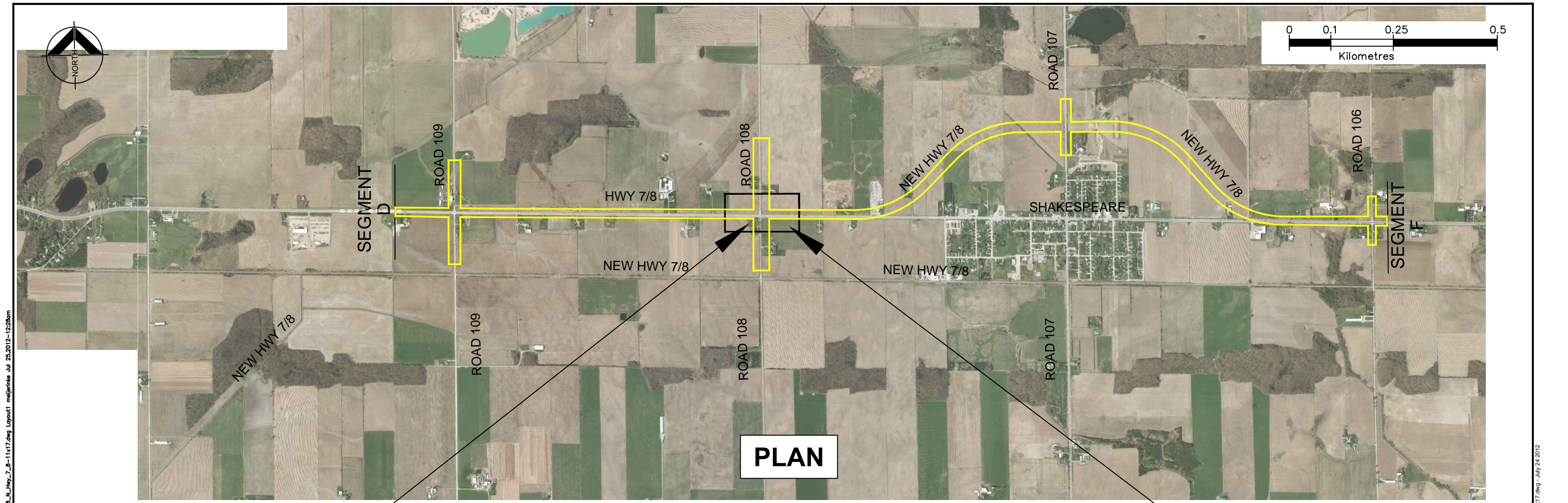
PROJECT: **HIGHWAY 7/8 TRANSPORTATION CORRIDOR & CLASS EA STUDY**
PRELIMINARY DESIGN ALTERNATIVES

DRAWING: **SEGMENT E**
ROAD 108/NEW HWY 7/8
ALTERNATIVE E1, E2, E3

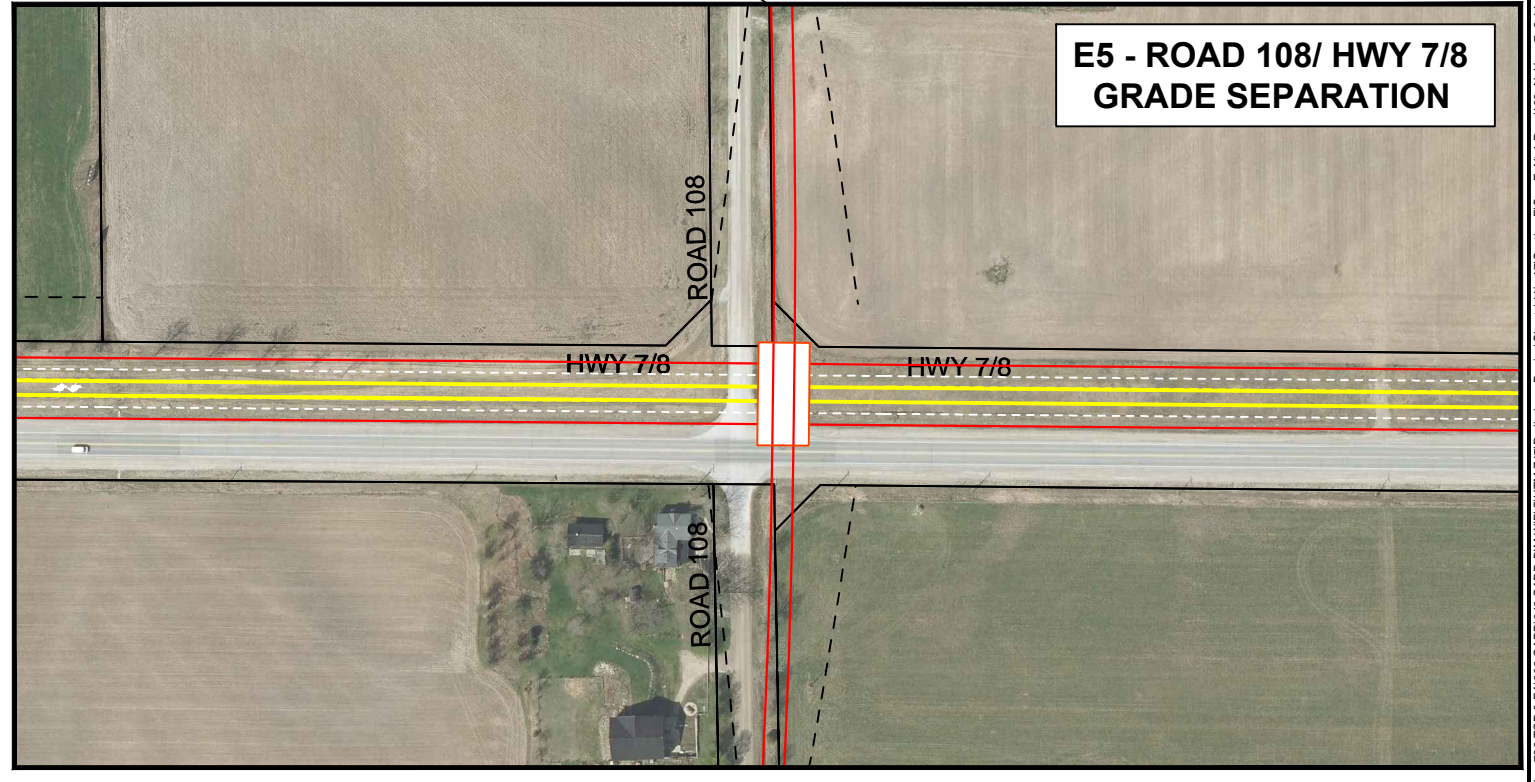
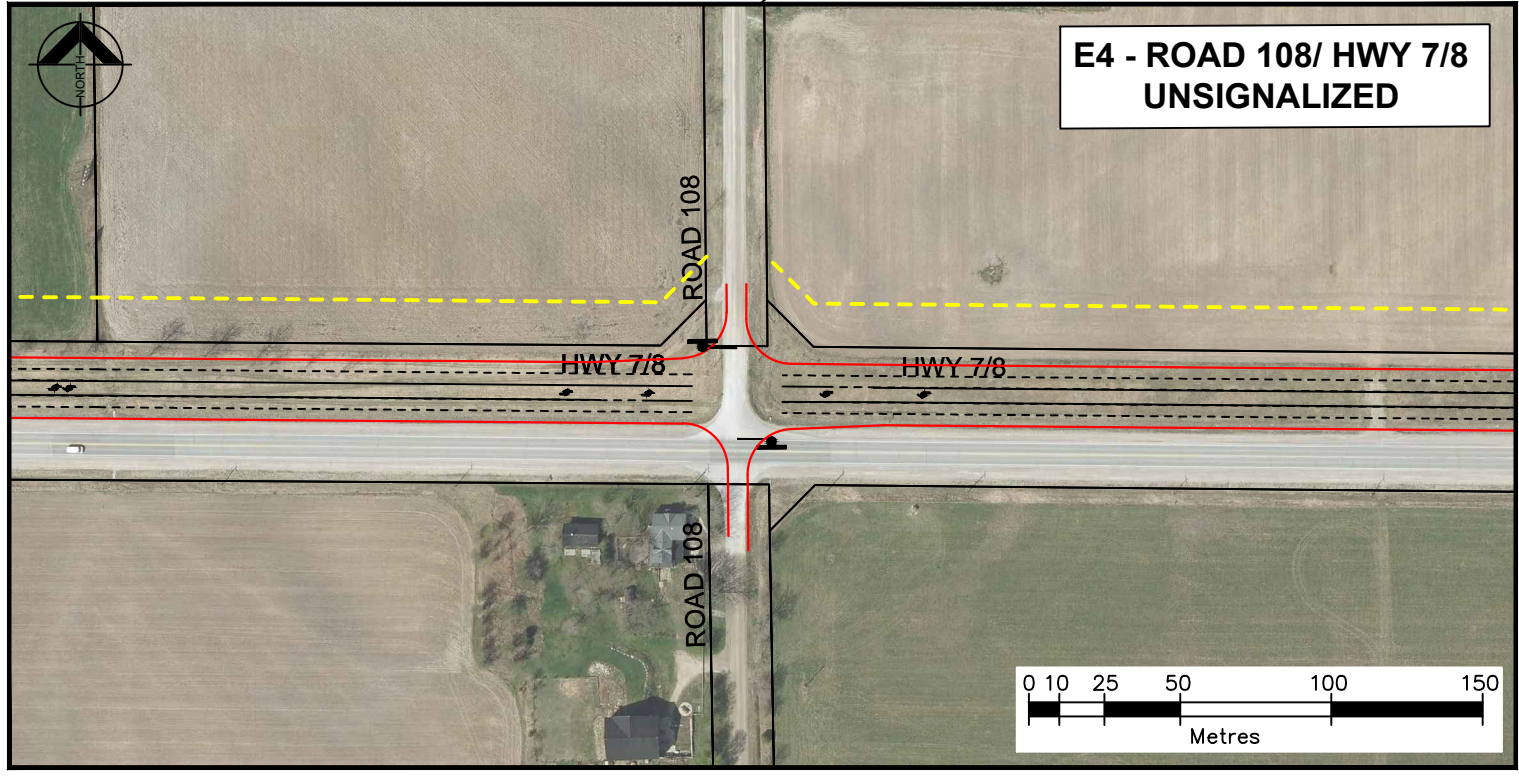
PROJECT No.: **60117929**

DRAWING No.: **SE-5**

G:\PROJECTS\242-60-42-80503 Hwy 7&8 TCP & EA\000-CADD\040 CADD-BM WIP\C\UTM 217\Preliminary Design\Sheets\11by17\Section E\Seg-E-Al-1-3-Road 108_N_Hwy_7_B-11x17.dwg - July 24, 2012



PLAN



G:\PROJECTS\242-60142-60142-80503 Hwy 7&8 TCP & EA\000-CADD\040 CADD-BM WIP\CUTM 217\Preiminary Design\Sheets\11by7\Section E\Seg-E-Alt-4-Road108_N_Hwy_7_B-11x17.dwg Layout1 mellejnske Jul 25 2012 - 12:28pm

G:\PROJECTS\242-60142-60142-80503 Hwy 7&8 TCP & EA\000-CADD\040 CADD-BM WIP\CUTM 217\Preiminary Design\Sheets\11by7\Section E\Seg-E-Alt-4-Road108_N_Hwy_7_B-11x17.dwg - July 24 2012

This drawing has been prepared for the use of AECOM's clients and is not to be used for any other purpose without the written consent of AECOM. AECOM is not responsible for any errors or omissions in this drawing. All measurements must be obtained from stated dimensions. Do not scale this document.



No.	DATE	BY	ISSUES / REVISIONS

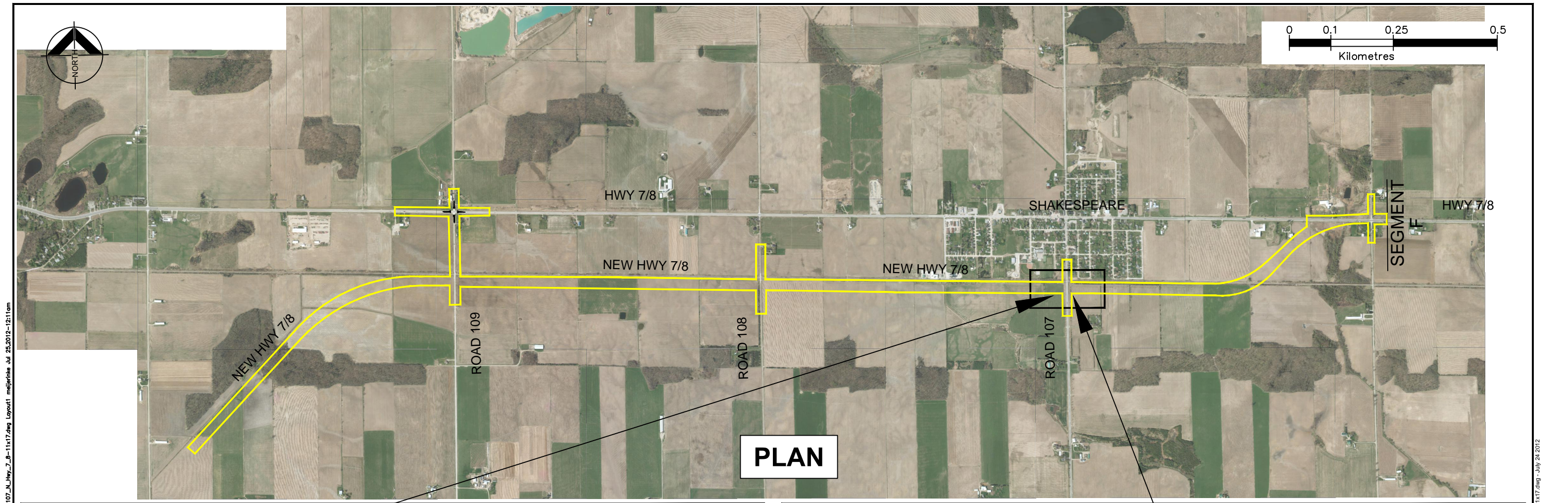


DRAWN BY: B HODSON	CHECKED BY:
DESIGNED BY:	APPROVED BY:
SCALE:	DATE: JULY 2012

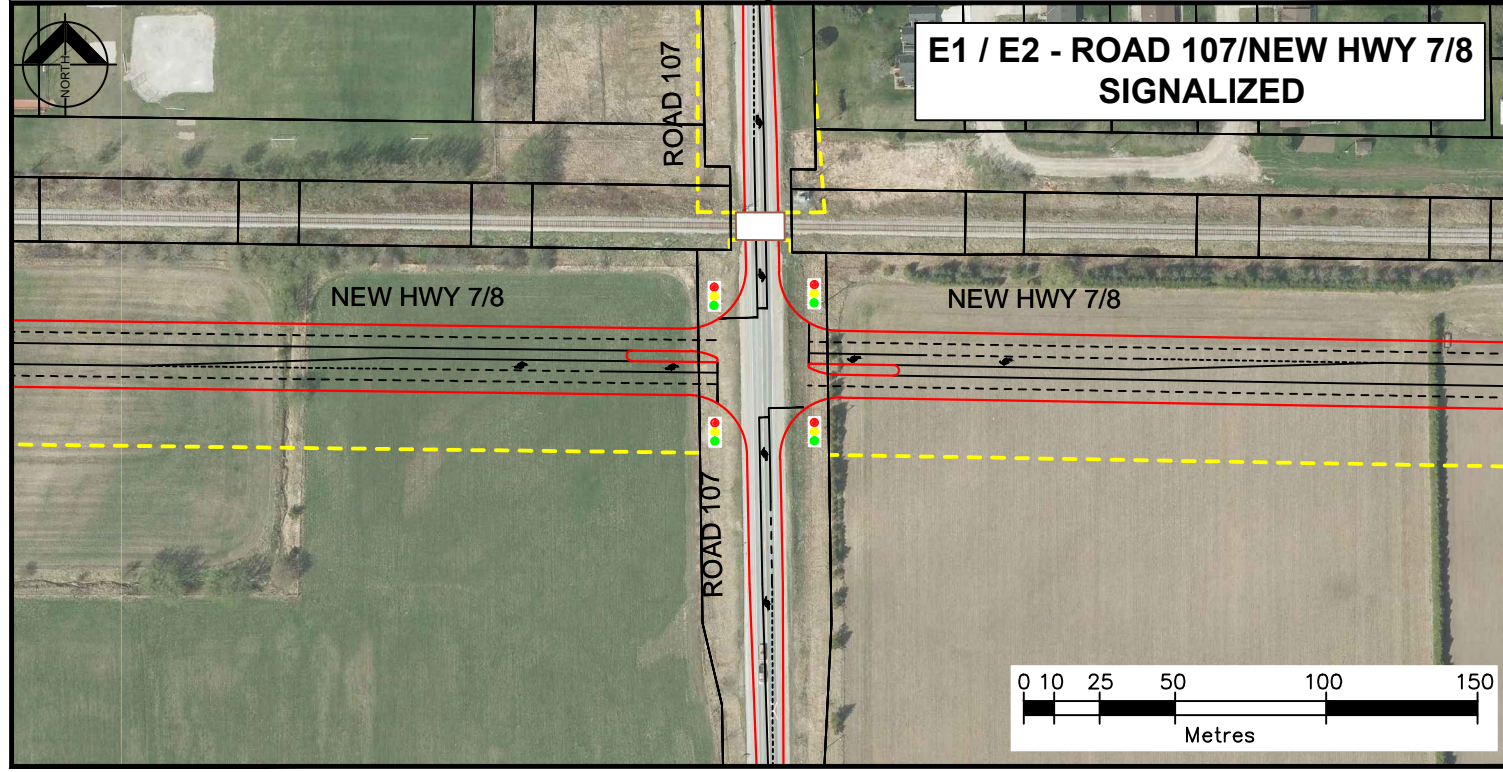
PROJECT: HIGHWAY 7/8 TRANSPORTATION CORRIDOR & CLASS EA STUDY
PRELIMINARY DESIGN ALTERNATIVES

DRAWING: SEGMENT E
ROAD 108/ HWY 7/8
ALTERNATIVE E4, E5

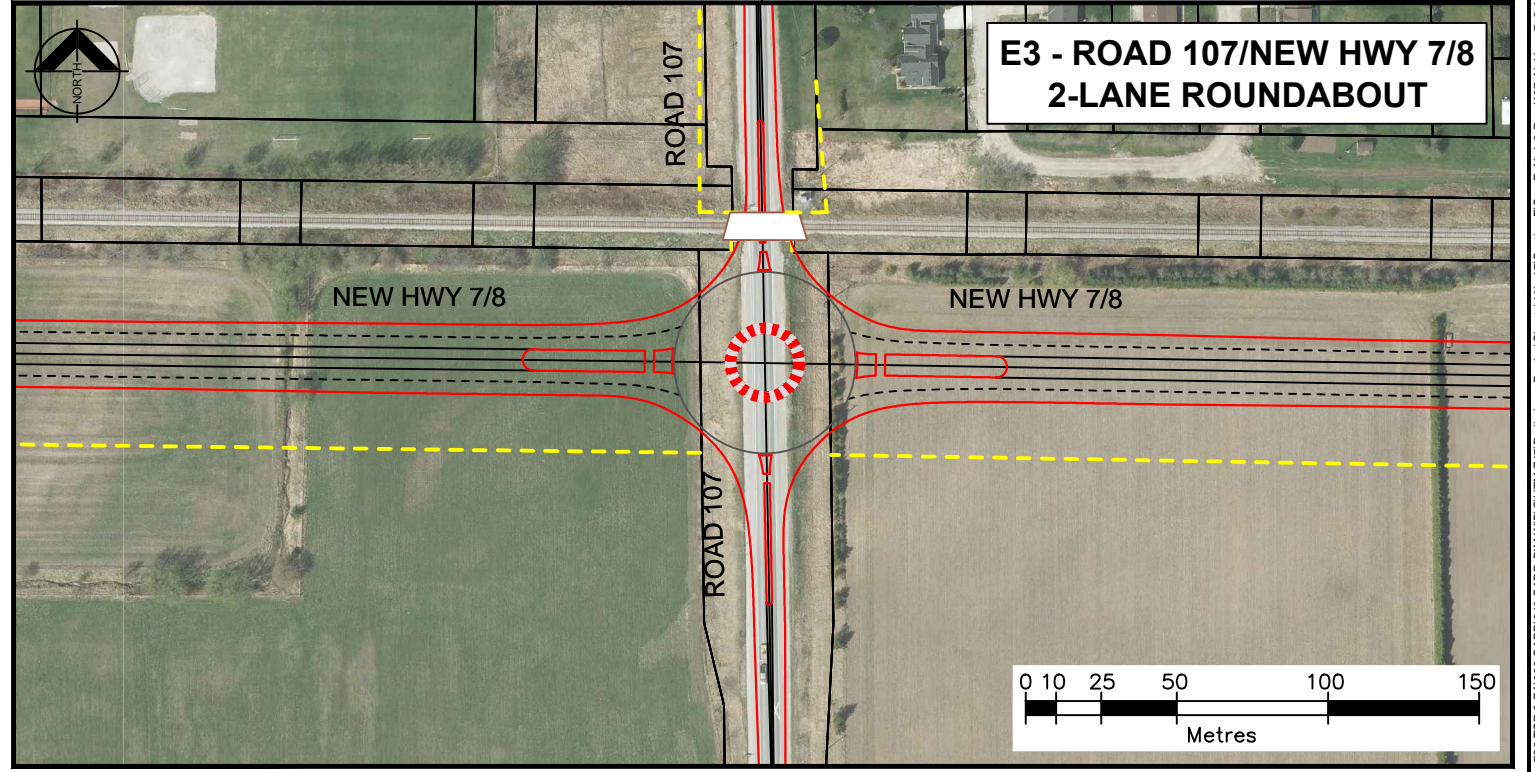
PROJECT No.: 60117929
DRAWING No.: SE-6



PLAN



**E1 / E2 - ROAD 107/NEW HWY 7/8
SIGNALIZED**



**E3 - ROAD 107/NEW HWY 7/8
2-LANE ROUNDABOUT**

G:\PROJECTS\242-60-42-80503 Hwy 7&8 TCP & EA\000-CADD\040 CADD-BM WIP\CUTM 217\Preliminary Design\Sheets\11by17\Section E\Seg-E-Alt-1-3-Road107_N_Hwy_7_B-11x17.dwg Layout1 medjetkhe Jul 25,2012-12:11pm

G:\PROJECTS\242-60-42-80503 Hwy 7&8 TCP & EA\000-CADD\040 CADD-BM WIP\CUTM 217\Preliminary Design\Sheets\11by17\Section E\Seg-E-Alt-1-3-Road107_N_Hwy_7_B-11x17.dwg - July 24 2012

This drawing has been prepared for the use of AECOM's client and may not be used, reproduced or relied upon by third parties, except as agreed by AECOM and its client, as required by law or for use by governmental reviewing agencies. AECOM accepts no responsibility, and denies any liability whatsoever, to any party that modifies this drawing without AECOM's express written consent.
Do not scale this document. All measurements must be obtained from stated dimensions.



AECOM Canada Ltd.
300 Water Street, Whitby, Ontario, Canada L1N 9J2
T905.668.9363 F905.668.0221

No.	DATE	BY	ISSUES / REVISIONS

CLIENT:



DRAWN BY: B HOODSON
DESIGNED BY:
SCALE:
CHECKED BY:
APPROVED BY:
DATE: JULY 2012

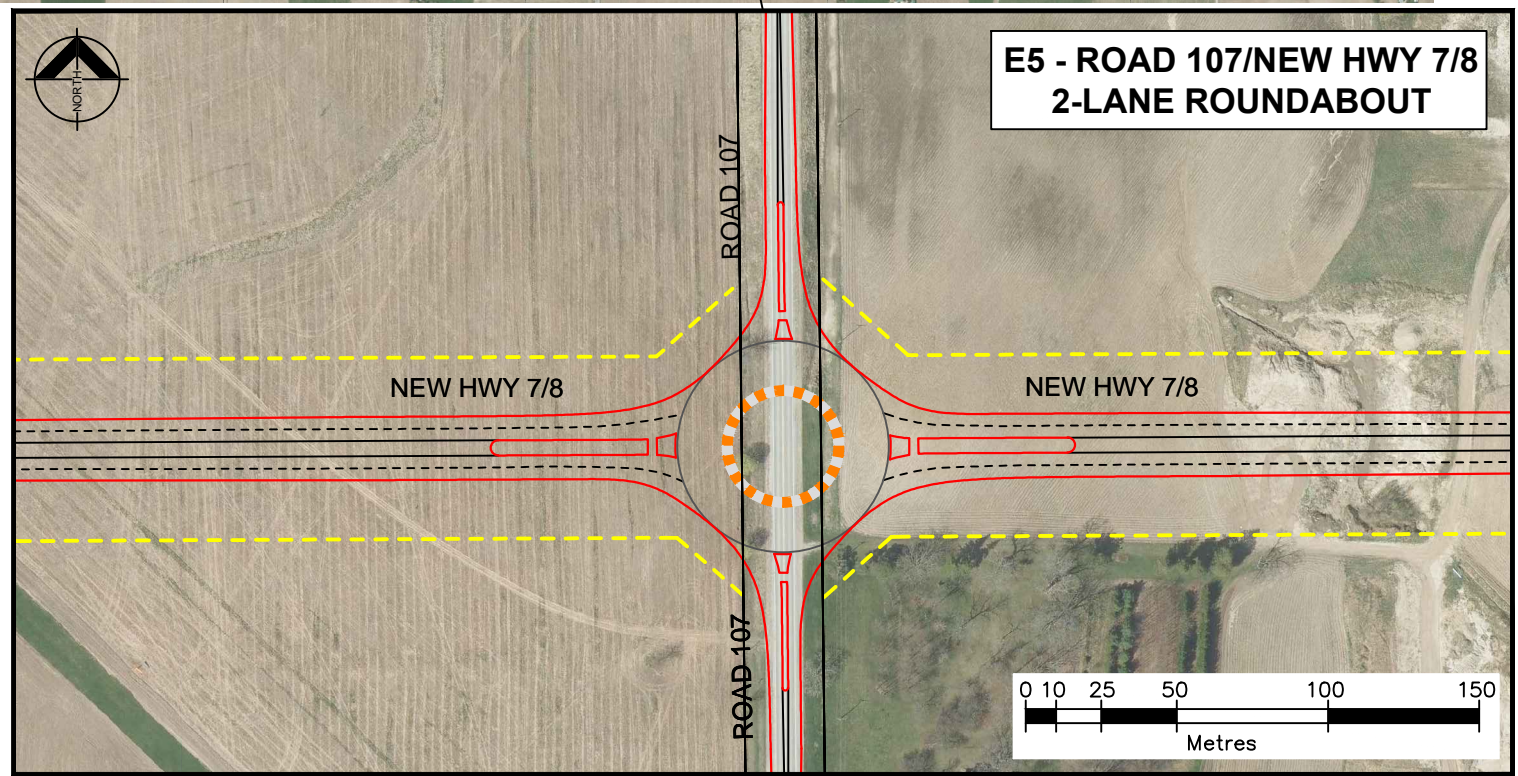
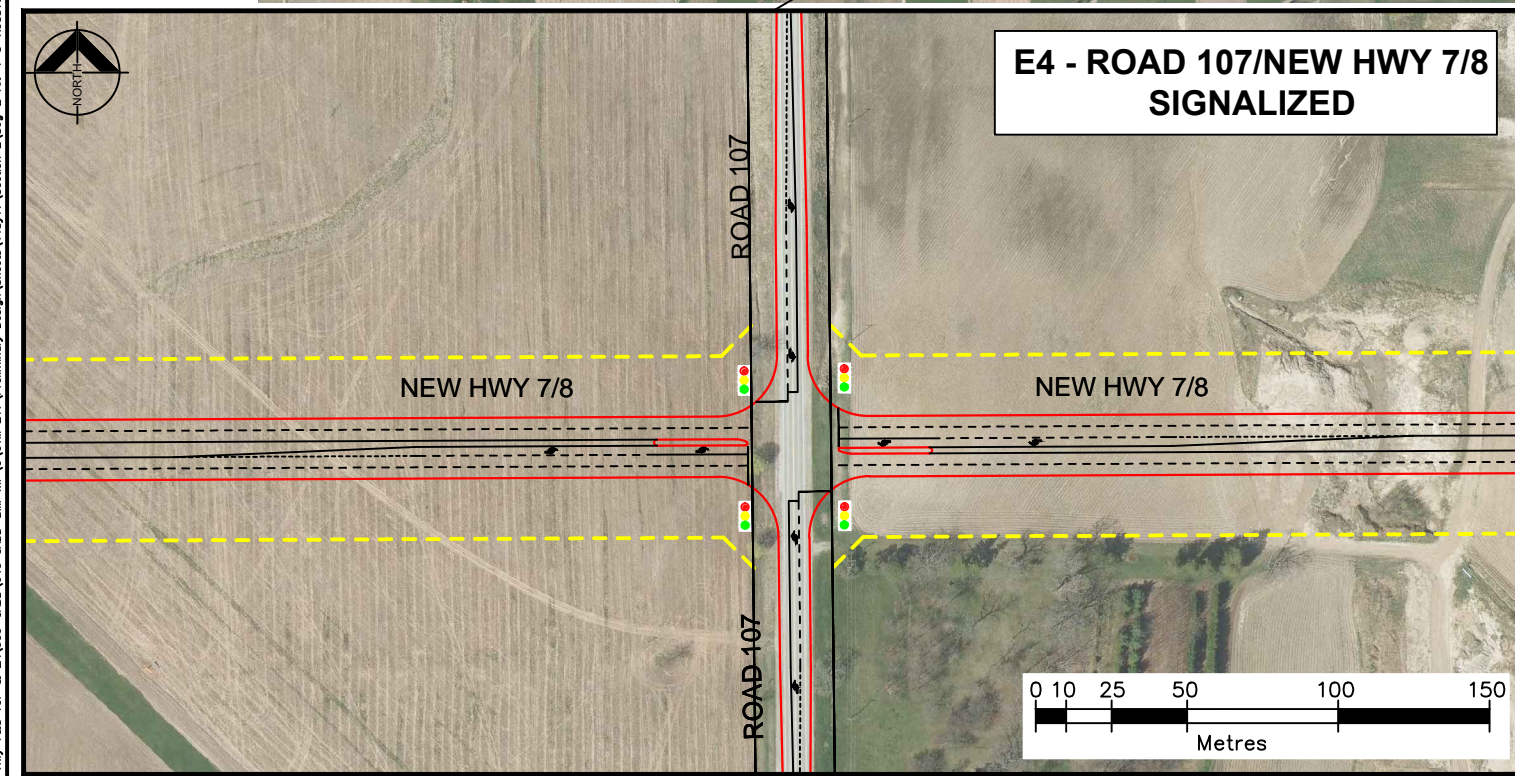
PROJECT: **HIGHWAY 7/8 TRANSPORTATION CORRIDOR & CLASS EA STUDY**
PRELIMINARY DESIGN ALTERNATIVES
DRAWING: **SEGMENT E
ROAD 107/NEW HWY 7/8
ALTERNATIVE E1, E2, E3**

PROJECT No.: 60117929
DRAWING No.: **SE-7**

G:\PROJECTS\242-60-42-80503 Hwy 7&8 TCP & EA\000-CADD\040 CADD-BM WIP\C\UTM 217\Preliminary Design\Sheets\11by7\Section E\Seg-E-Alt-4-5-Road107_N_Hwy_7_B-11x17.dwg Layout1.mxd 25/2012-12:23pm



PLAN



This drawing has been prepared for the use of AECOM's client and may not be used, reproduced or relied upon by third parties, except as agreed by AECOM and its client, as required by law or for use by governmental reviewing agencies. AECOM accepts no responsibility, and denies any liability whatsoever, to any party that modifies this drawing without AECOM's express written consent.

Do not scale this document. All measurements must be obtained from stated dimensions.



AECOM Canada Ltd.
300 Water Street, Whitby, Ontario, Canada L1N 9J2
T905.668.9363 F905.668.0221

No.	DATE	BY	ISSUES / REVISIONS

CLIENT:



DRAWN BY: B HOODSON	CHECKED BY:
DESIGNED BY:	APPROVED BY:
SCALE:	DATE: JULY 2012

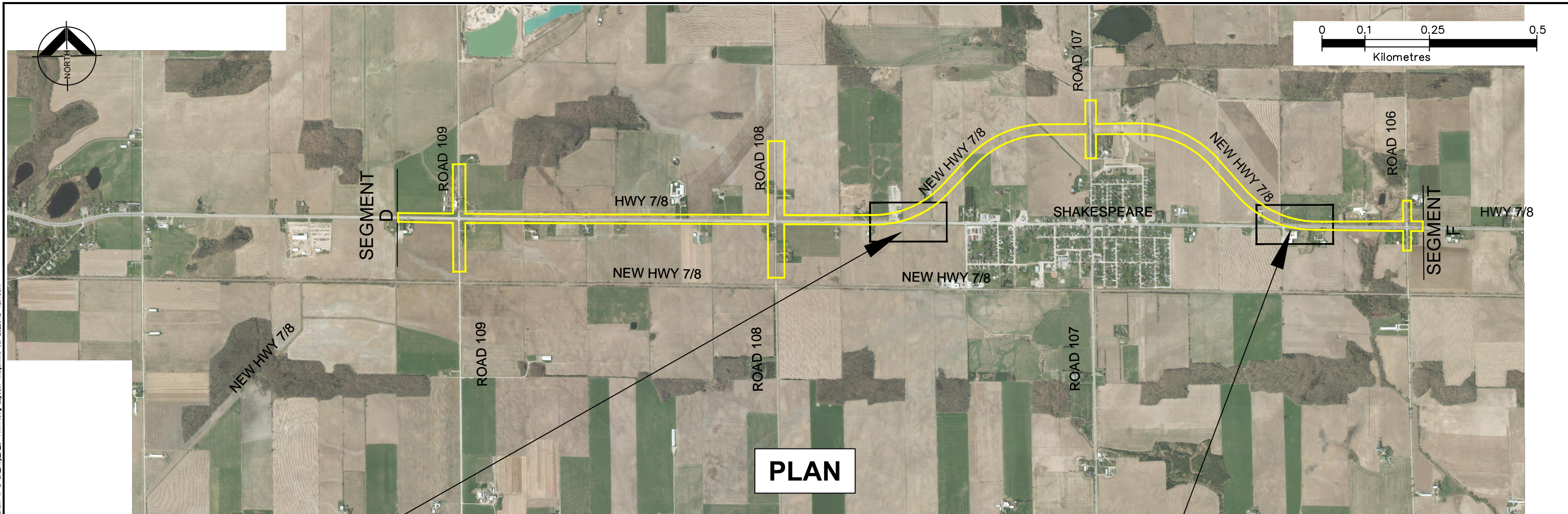
PROJECT: **HIGHWAY 7/8 TRANSPORTATION CORRIDOR & CLASS EA STUDY**
PRELIMINARY DESIGN ALTERNATIVES

DRAWING: **SEGMENT E**
ROAD 107/NEW HWY 7/8
ALTERNATIVE E4, E5

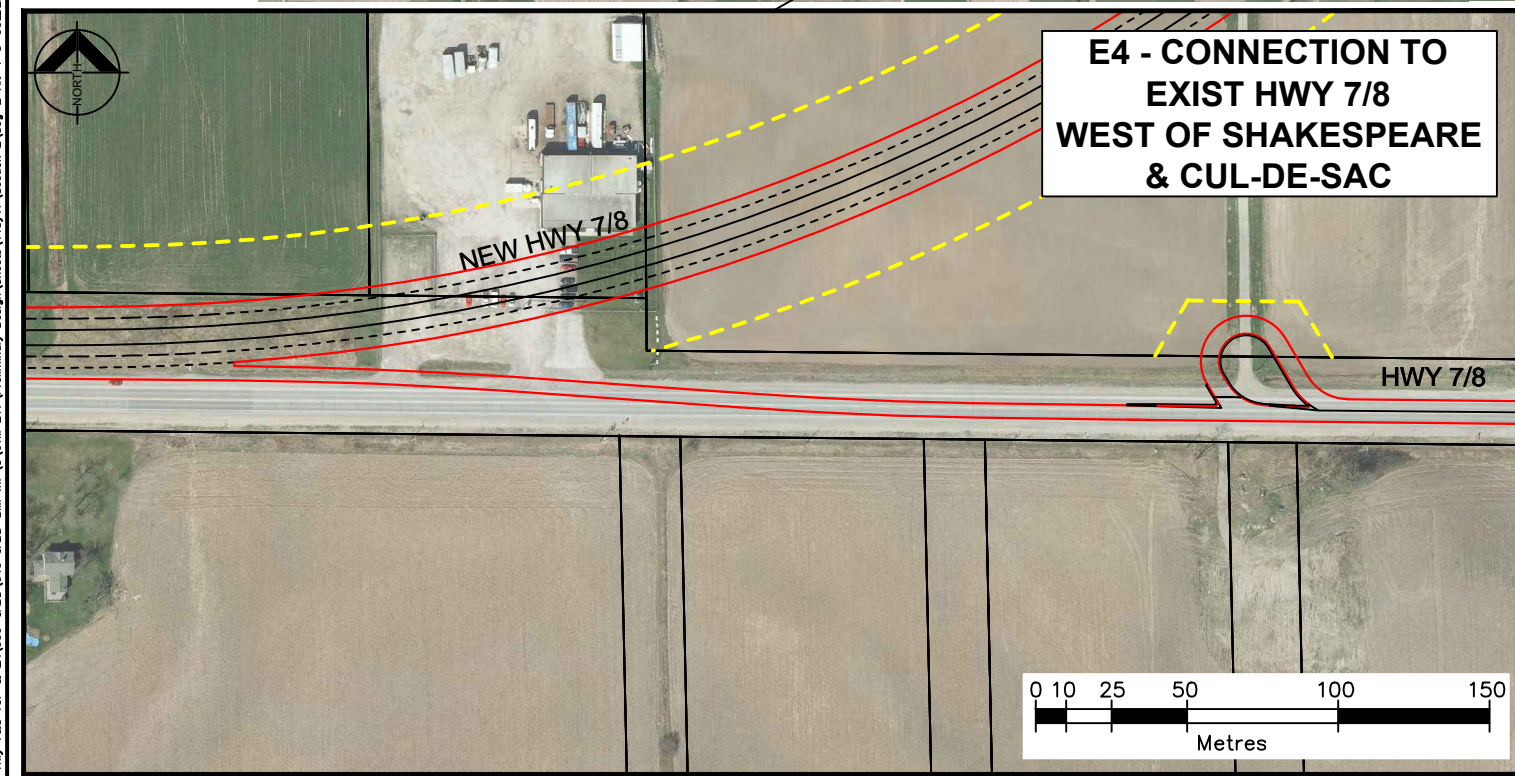
PROJECT No.: 60117929
DRAWING No.: **SE-8**

G:\PROJECTS\242-60-42-80503 Hwy 7&8 TCP & EA\000-CADD\040 CADD-BM WIP\C\UTM 217\Preliminary Design\Sheets\11by7\Section E\Seg-E-Alt-4-5-Road107_N_Hwy_7_B-11x17.dwg - July 24 2012

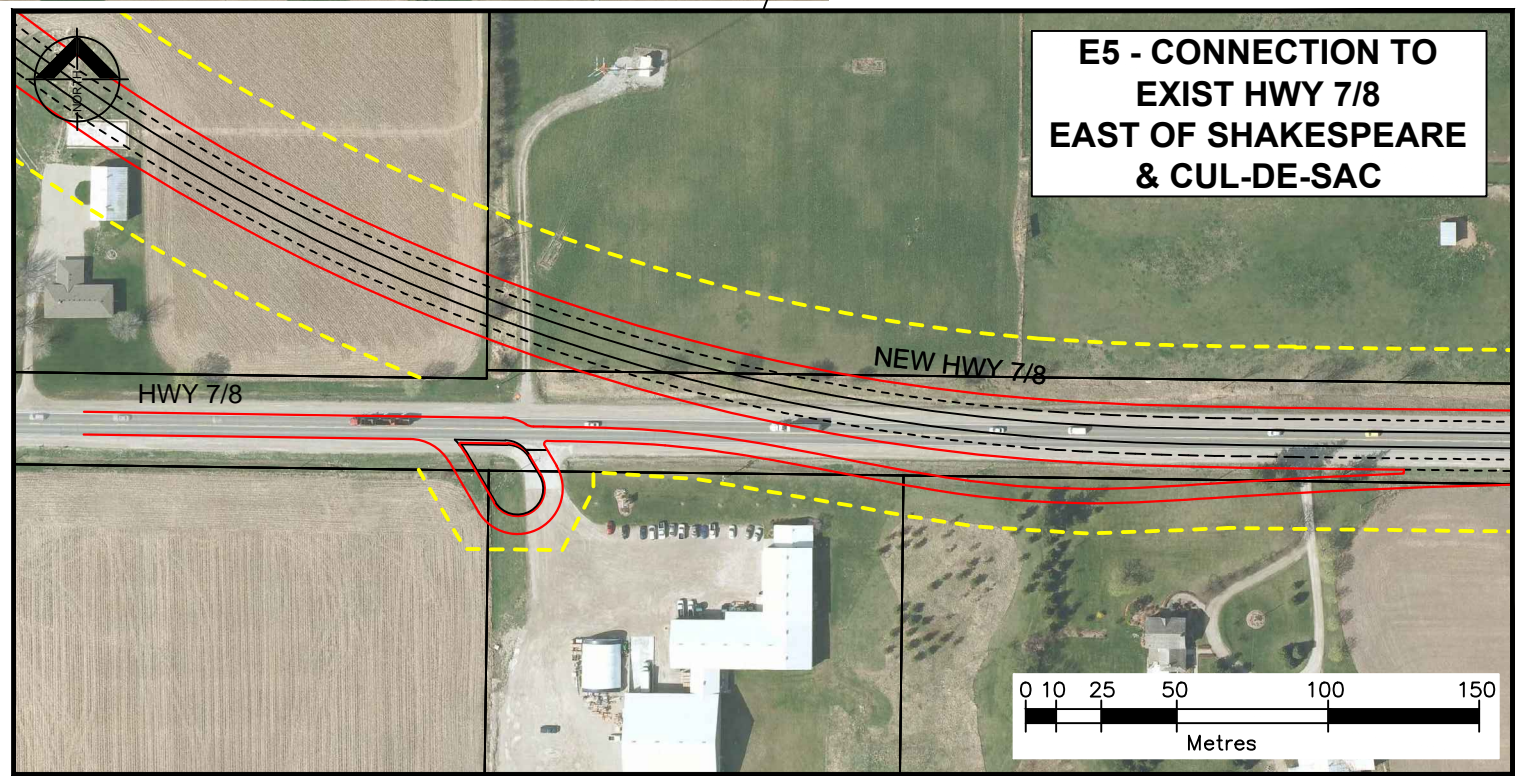
G:\PROJECTS\242-60-42-80503 Hwy 7&8 TCP & EA\000-CADD\040 CADD-BM WIP\CUTM 217\Preliminary Design\Sheets\11by17\Section E\Seg-E-Alt-4-5-CULDESACK-W-E-EX_Hwy_7_8-11x17.dwg Layout1 mejerinko Jul 25 2012 12:18pm



PLAN



E4 - CONNECTION TO EXIST HWY 7/8 WEST OF SHAKESPEARE & CUL-DE-SAC



E5 - CONNECTION TO EXIST HWY 7/8 EAST OF SHAKESPEARE & CUL-DE-SAC

This drawing has been prepared for the use of AECOM's client and may not be used, reproduced or relied upon by third parties, except as agreed by AECOM and its client, as required by law or for use by governmental reviewing agencies. AECOM accepts no responsibility, and denies any liability whatsoever, to any party that modifies this drawing without AECOM's express written consent.
Do not scale this document. All measurements must be obtained from stated dimensions.



No.	DATE	BY	ISSUES / REVISIONS



CLIENT:
DRAWN BY: B HODSON
DESIGNED BY:
SCALE:
CHECKED BY:
APPROVED BY:
DATE: JULY 2012

PROJECT: HIGHWAY 7/8 TRANSPORTATION CORRIDOR & CLASS EA STUDY PRELIMINARY DESIGN ALTERNATIVES
DRAWING: SEGMENT E CONNECTION TO EXIST HWY 7/8 WEST & EAST OF SHAKESPEAR ALTERNATIVE E4, E5

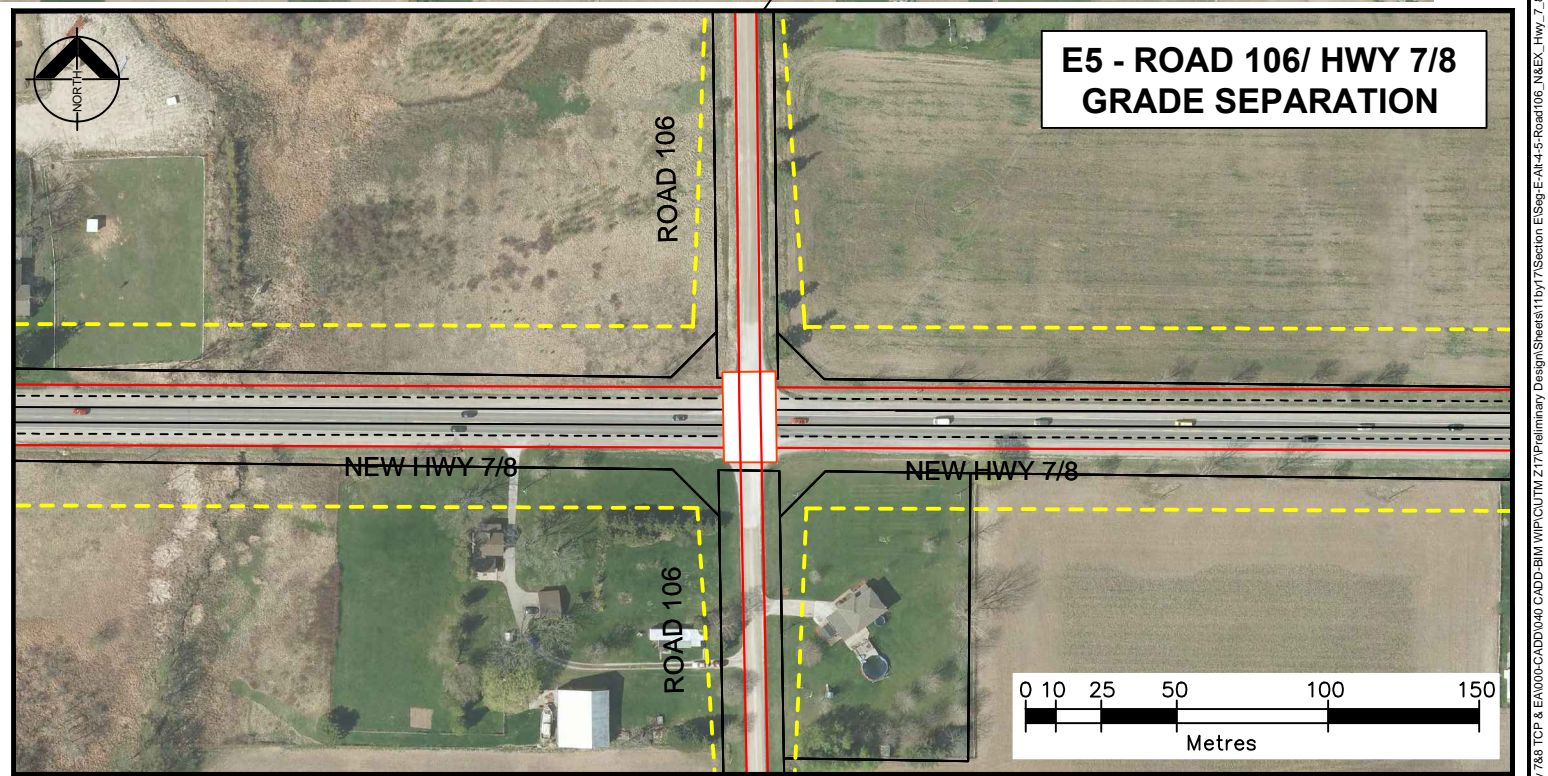
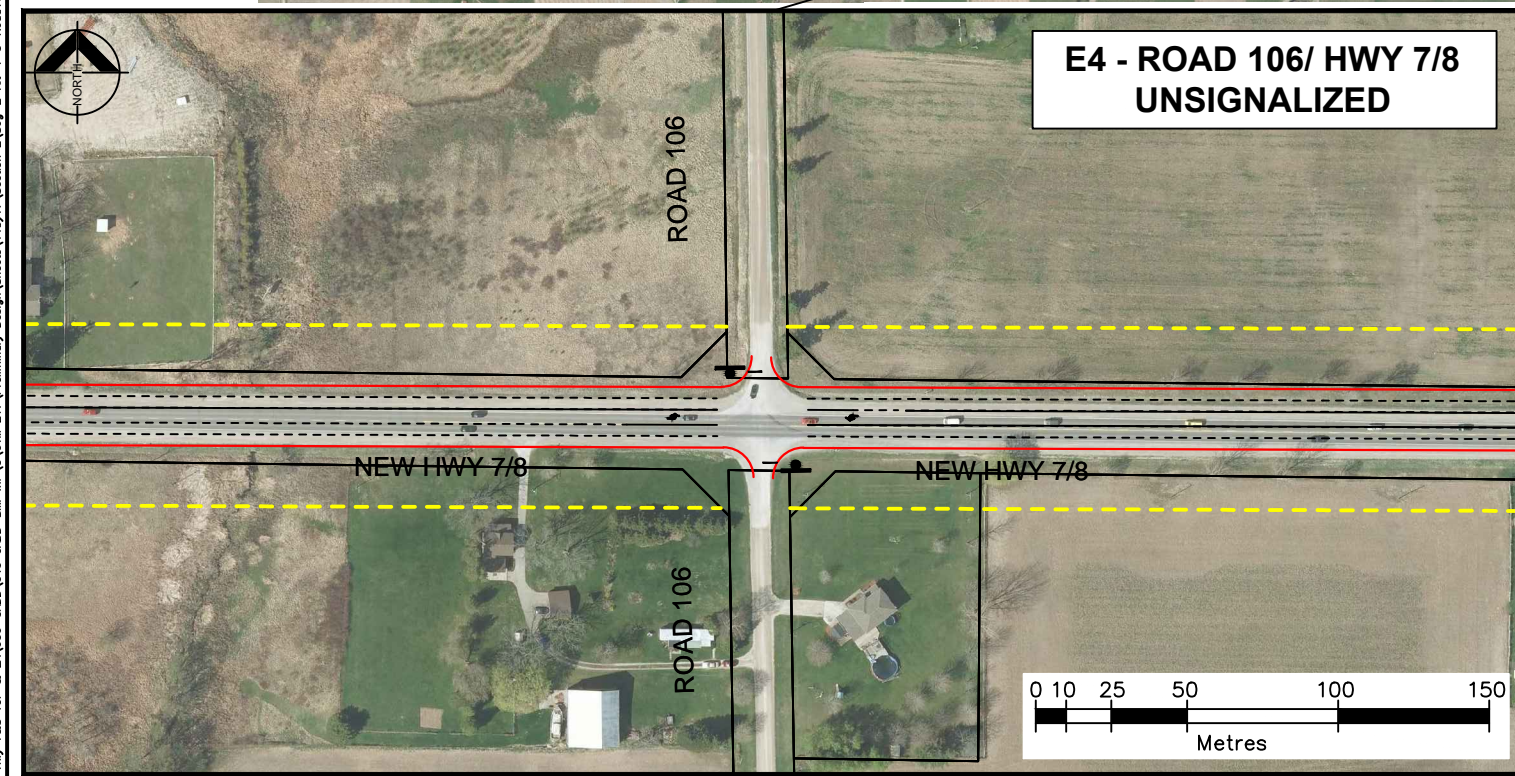
PROJECT No.: 60117929
DRAWING No.: SE-10

G:\PROJECTS\242-60-42-80503 Hwy 7&8 TCP & EA\000-CADD\040 CADD-BM WIP\CUTM 217\Preliminary Design\Sheets\11by17\Section E\Seg-E-Alt-4-5-CULDESACK-W-E-EX_Hwy_7_8-11x17.dwg - July 24 2012

G:\PROJECTS\242-60-42-80503 Hwy 7&8 TCP & EA\000-CADD\040 CADD-BM WIP\CUTM 217\Preliminary Design\Sheets\11by17\Section E\Seg-E-Alt-4-5-Road 106_N&E_Hwy_7_8-11x17.dwg Layout1_majerinko Jul 25 2012 - 12:20pm



PLAN



This drawing has been prepared for the use of AECOM's client and may not be used, reproduced or relied upon by third parties, except as agreed by AECOM and its client, as required by law or for use by governmental reviewing agencies. AECOM accepts no responsibility and disclaims any liability whatsoever, for any party that modifies this drawing without AECOM's express written consent.
Do not scale this document. All measurements must be obtained from stated dimensions.



AECOM Canada Ltd.
300 Water Street, Whitby, Ontario, Canada L1N 9J2
T905.668.9363 F905.668.0221

No.	DATE	BY	ISSUES / REVISIONS

CLIENT:



DRAWN BY: B HOODSON
DESIGNED BY:
SCALE:
CHECKED BY:
APPROVED BY:
DATE: JULY 2012

PROJECT: HIGHWAY 7/8 TRANSPORTATION CORRIDOR & CLASS EA STUDY
PRELIMINARY DESIGN ALTERNATIVES
DRAWING: SEGMENT E
ROAD 106/ HWY 7/8
ALTERNATIVES E4, E5

PROJECT No.: 60117929
DRAWING No.: SE-11

G:\PROJECTS\242-60-42-80503 Hwy 7&8 TCP & EA\000-CADD\040 CADD-BM WIP\CUTM 217\Preliminary Design\Sheets\11by17\Section E\Seg-E-Alt-4-5-Road 106_N&E_Hwy_7_8-11x17.dwg - July 24 2012